

Product info

More information at www.magix.com





MAGIX PC Check & Tuning 2012

More information at www.magix.com

Get the maximum out of your PC!

According to independent tests: PCs that are used extensively show signs of slowing down after only a few months.

In a selection of PCs with differing configuration **PC Check & Tuning managed to increase the performance of test devices by up to 300%**, achieving results that were nearly equal to their original performance. Optimize your old PC before thinking about buying new hardware! Be amazed at the wide range of functions and ease of use!

Save in three ways: time, money and effort

Instead of having a collection of hard-to-use individual programs get PC Check & Tuning, it offers all modern functions for managing and speeding up your system, all in one simple program.

Program interface



More speed • Fewer problems •

Long-lasting performance • Continual updates

In one step, the program analyzes the computer, detects problems, and identifies areas in need of optimization then it removes them all on its own. Easy-to-understand menus and individual functions increase computer performance and save memory and power. Furthermore the program gives you to access hidden Windows settings, which allow you to optimize and adjust Windows accordingly. What is more all drivers and programs are checked and updated if necessary. This increases stability, speed and security.

So you can leave your PC at any time **the system protection MAGIX PC Live** check the PC's performance and stability and will inform you of problems and updates.



NEW! MAGIX Driver Update MX

Update old drivers!

The integrated, newly-developed Driver Update MX saves you from having to search for hardware drivers on manufacturers' pages.

Matching drivers for over 30,000 hardware components available. The up-to-dateness and compatibility of your drivers will be checked by various system components.

if new drivers are available for your computer, they may be easily downloaded and directly installed.

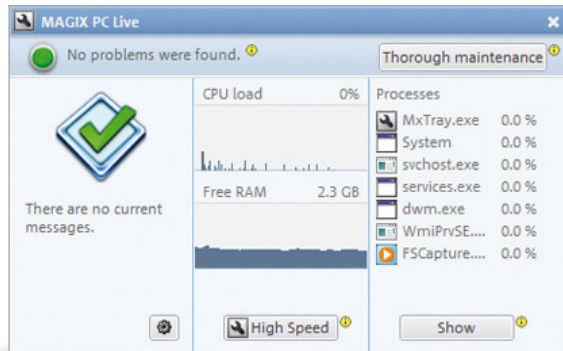




MAGIX PC Check & Tuning 2012

More information at www.magix.com

NEW! PC Live



Permanently monitors your system and thus ensures performance and stability

Just as a virus scanner protects against virus attacks, MAGIX PC Live protects your PC against reduction in PC performance, without even having to open the main program.

PC Live monitors continually in the background and gives you a feeling of safety. You will be informed in case of problems or if program updates are available.

The PC Live cockpit keeps you updated on the most important system files and also allows you to activate high-speed mode at any time.

NEW! Performance check

Send your PC to the performance checking station!

The Performance Check determines the performance level of your entire system as well as all relevant computer components.

So you'll see straight away which components your PC is slowing down and how powerful your PC is in comparison to current standards.

In addition you can test online how well your PC performs compared to computers from other users and with friends.



NEW! Defragment drives

Clean up your hard drive!

Files are usually not written as an uninterrupted block. Constant write and delete operations gradually lead to file fragmentation.

Defragmenting is a process that reduces the amount of fragmentation, which speeds up the time it takes to access files. Thanks to new defragmentation technology this function is now faster and more efficient.





MAGIX PC Check & Tuning 2012

More information at www.magix.com

Supported operating systems

- Microsoft® Windows® 7 (32-bit and 64-bit)
- Microsoft® Windows® Vista® (32-bit and 64-bit)
- Microsoft® Windows® XP (32-bit)

Minimum system requirements

All MAGIX programs are developed with user-friendliness in mind so that all the basic functions run smoothly and can be fully controlled, even on low-performance computers. Please refer to your operating system's control panel for technical information on your computer.

- **Processor:** 400 MHz
- **RAM:** 256 MB
- **Graphics card:** Onboard graphics card with a screen resolution of at least 1024 x 600
- **Hard disk memory:** 300 MB free disk space for program installation
- **Optical drive:** DVD drive (only for program installation of the box version)

Note: The program's internal online services and the program update require an Internet connection.

